

MK - Miko
(otěruvzdornost 100.000 cyklů)



MK 100



MK 200



MK 302



MK 400



MK 405



MK 421



MK 501

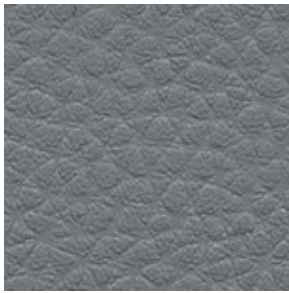


MK 603

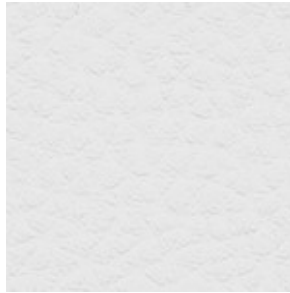


MK 800

**SK - syntetická kůže
(otěruvzdornost 20.000 cyklů)**



SK 01



SK 02



SK03



SK 04



SK 05



SK06



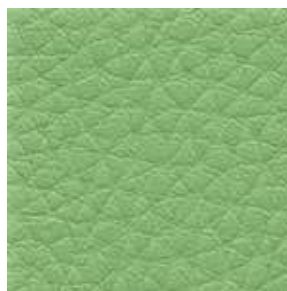
SK 07



SK 08



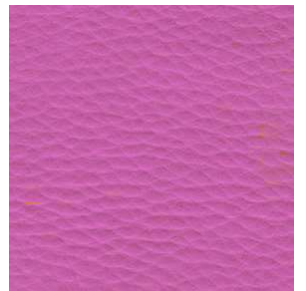
SK10



SK 11



SK 12

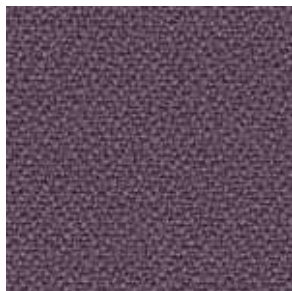


SK13

P - Pelle
pravá hovězí kůže



P03



P04



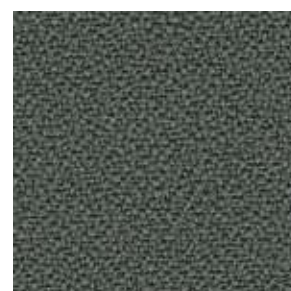
P05



P06



P07



P08