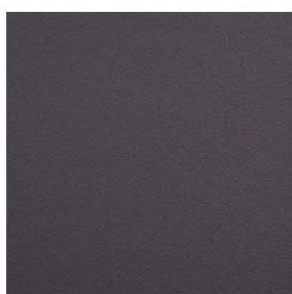
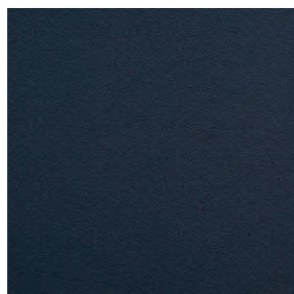


## BONDAI - skupina P

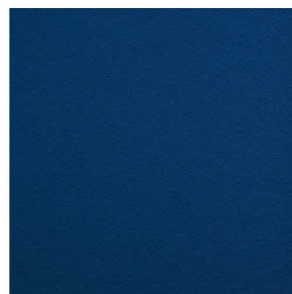
Material 100% Polyester gramáž: 250 g/m<sup>2</sup> ±2%, 350 g/bm ±2% / Šířka: 140 cm / Odolnost vůči oděru 150.000 Martindale / Odolnost vůči ohni BS EN 1021-1,2:2006, CRIB 5, BS 7176:1995, AM 18 NF D 60013 / Stálobarevnost 6 (ISO 105 - B02:1999) / Stálost při tření: za vlhka: 4-5; za sucha: 4-5 (ISO 105 - X12:1995)



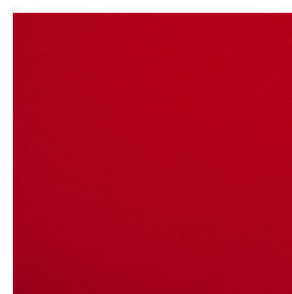
221



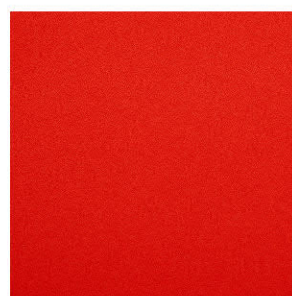
222



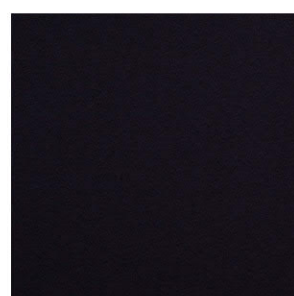
223



224



225



226



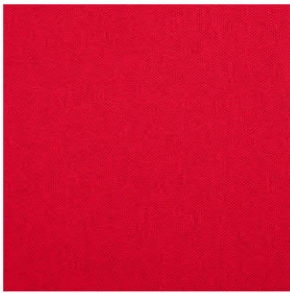
228



233

## ERA - skupina A

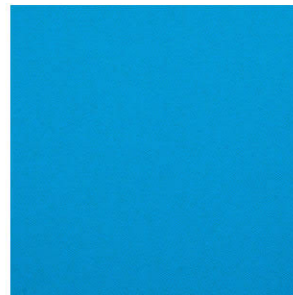
Materiál 100% polyester / Hmotnosť 320 g/m<sup>2</sup> ± 5%, 488 g/bm ± 5% / Šířka 140 cm / Odolnosť proti oděru 100.000 Martindale / Odolnosť proti žmolčovaniu skupina 4 / Stálobarevnosť skupina 5 / Odolnosť proti ohni EN 1021 - 1:2014, EN 1021 - 2:2014, BS 7176 : 2007 low hazard



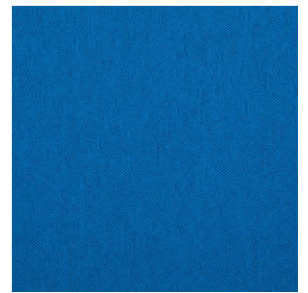
2043



2046



2048



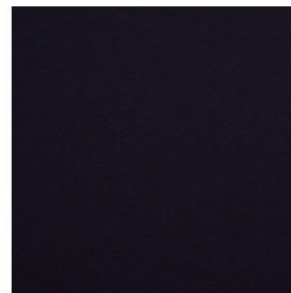
2049



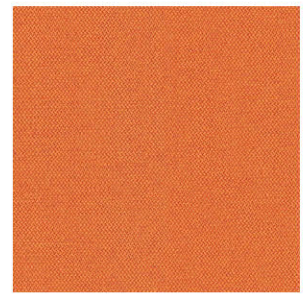
2050



2051



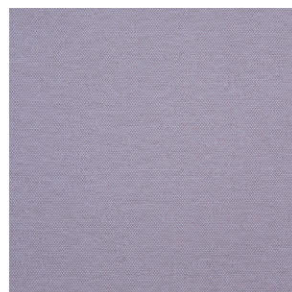
2052



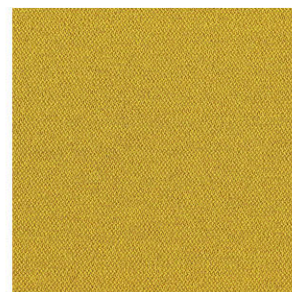
2053



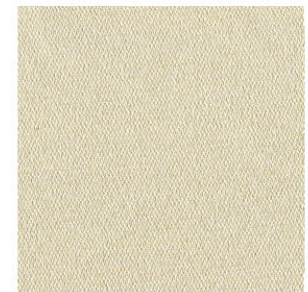
2055



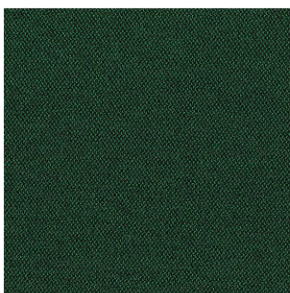
2058



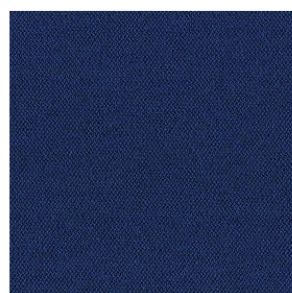
2061



2067



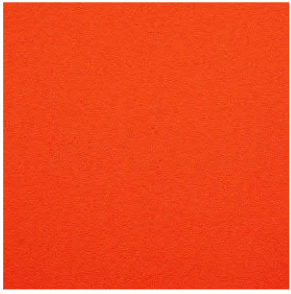
2068



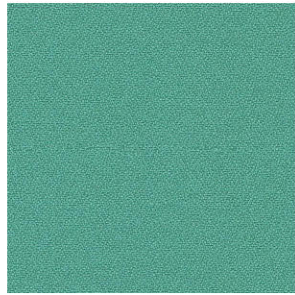
2069

## PHOENIX - skupina A

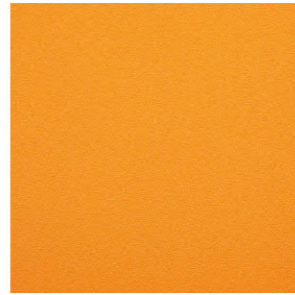
Materiál 100% polyester / Hmotnost 285 g/m<sup>2</sup> ± 5%, 400 g/bm ± 5% / Šíře 140 cm / Odolnost proti oděru 100.000 Martindale / Odolnost proti žmol-  
kování skupina 4 / Stálobarevnost skupina 6 / Odolnost proti ohni EN 1021 - 1:2006, EN 1021 - 2:2006, BS 7176 : 2007 low hazard



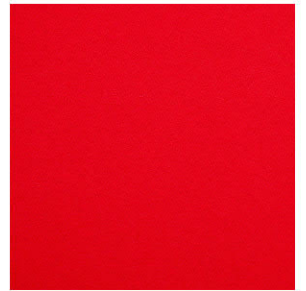
530



532



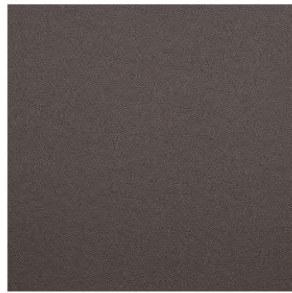
591



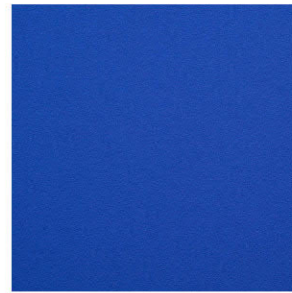
592



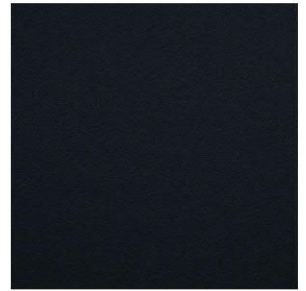
593



595



598



599

## MILTON - skupina B

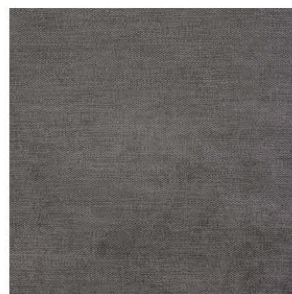
Materiál 97% polyester, 3% nylon / Hmotnost 300g/m<sup>2</sup> / Šíře 140 cm / Odolnost proti oděru >150 000 Martindale / Odolnost proti žmolování mokry: 4, suchý: 4-5 (ISO 105 - x12) / Stálobarevnost 4 (ISO 105 - B02) / Odolnost proti ohni BS 5852:část 1:1979,zdroj 0 (cigareta) / **VODĚODPUDIVÁ LÁTKA**



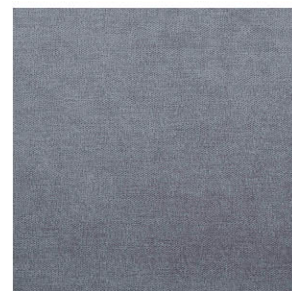
3122



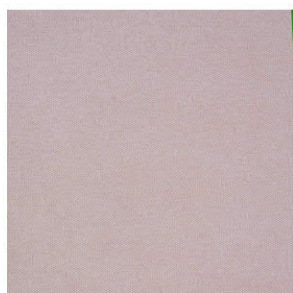
3123



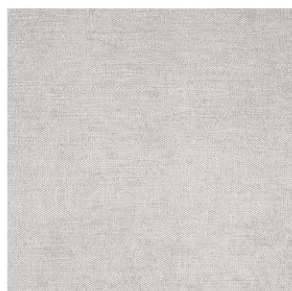
3124



3125



3126



3127



3129



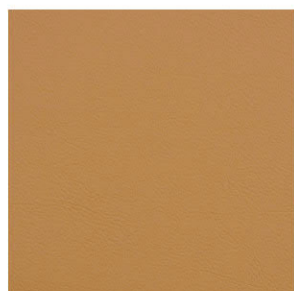
3130

## VALENCIA - skupina B

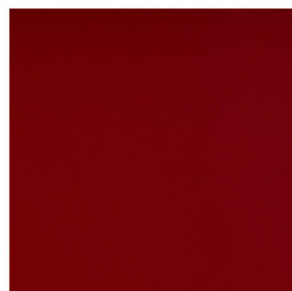
Materiál svrchní vrstva: 100% vinyl, podklad:100% polyester HI-LOFT<sup>2</sup>™ / Hmotnost 650g/m<sup>2</sup> / Šíře 137 cm / Ochranný povrch Permablok3@/ Odolnost proti oděru >300 000 Martindale / Odolnost proti ohni EN 1021 PART 1 & 2 / Odolnost proti chladu -23 °C / Odolnost proti UV záření >= 7 (1000 hodin, stupnice modré vlny)



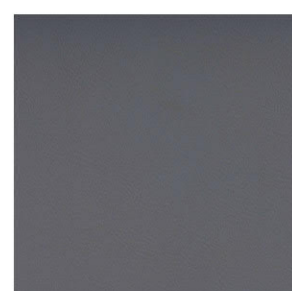
1701



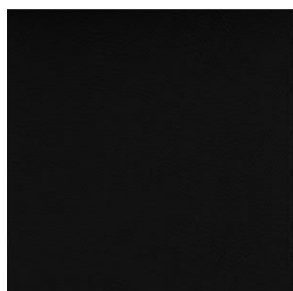
1702



1708



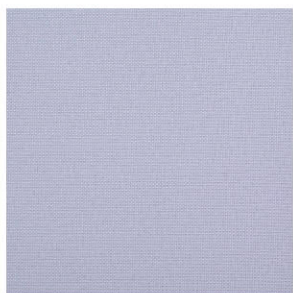
1709



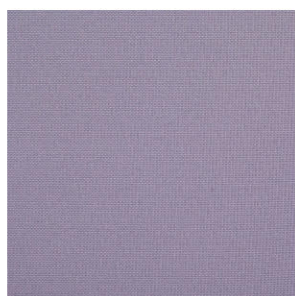
1710

## URBAN - skupina B

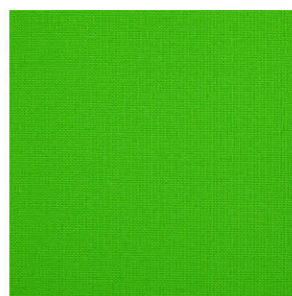
Materiál 100% Xtreme FR / Hmotnosť 320 g/m<sup>2</sup> ± 5%, 450 g/bm ± 5% / Šířka 140 cm / Odolnosť proti oděru 90.000 Martindale / Odolnosť proti žmol-  
kování skupina 4 / Stálobarevnosť skupina 6 / Odolnosť proti ohni EN 1021 - 1:2006, EN 1021 - 2:2006, BS 7176 : 2007 Low Hazard, BS 7176 : 2007  
Medium Hazard



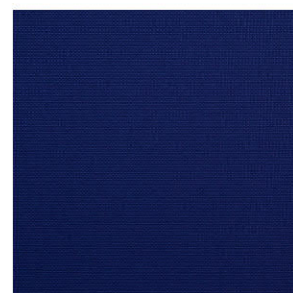
3001



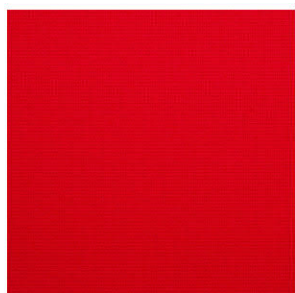
3002



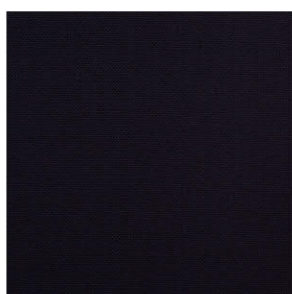
3003



3004



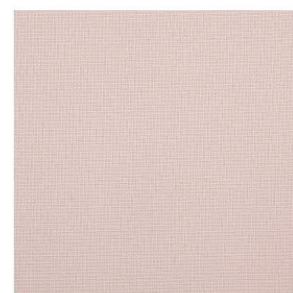
3006



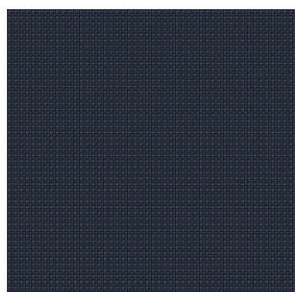
3007



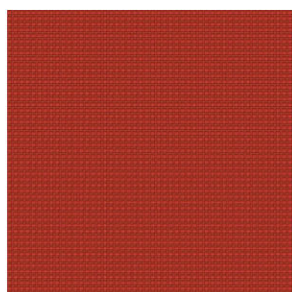
3011



3012



3023



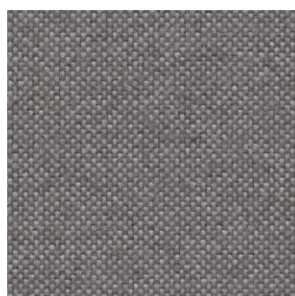
3024

## JET BIOACTIVE - skupina B

Material 100% polyester TREVIRA CS® bioactive / Hmotnost ± 5% 260 g/m<sup>2</sup> ; 365 g/ b.m. / Šíře 140 cm / Odolnost proti oděru martindale 65.000 / Odolnost proti žmolování skupina 5 / Stalobarevnost skupina 6 / Odolnost proti ohni UNI 9174-8456, DIN 4102, NF 92501-7, CRIB 5, EN 1021/1-2, IMO part 8, UNI 9175, medium hazard



3151



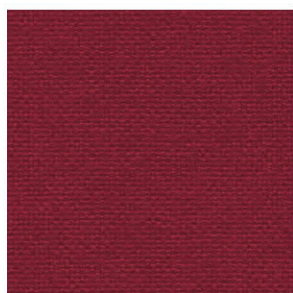
3152



3153



3154



3155



3156



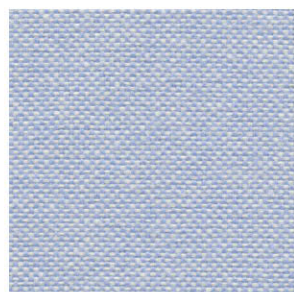
3157



3158



3159



3160



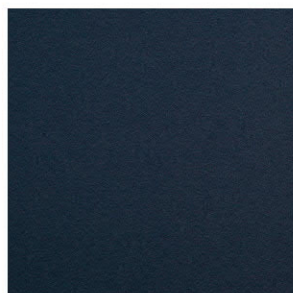
3161

## XTREME - skupina B

Material 100% post-consumer recycled polyester/ Hmotnost ± 5% 310 g/m<sup>2</sup> ; 434 g/ b.m. / Šíře 140 cm / Odolnost proti oděru martindale >100.000 / Odolnost proti žmolování skupina 4 / Stalobarevnost skupina 6 (ISO 105-B02) / Odolnost proti ohni EN 1021 - 1&2 Cigarette & Match, BS 7176 Low Hazard, BS 5852 Ignition Source 5



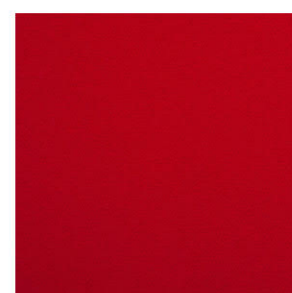
954



970



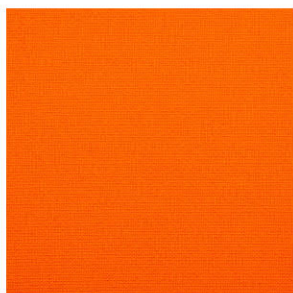
3071



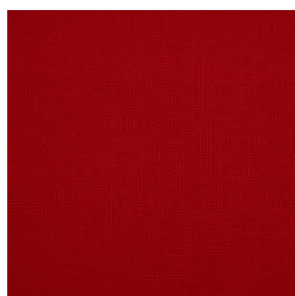
3074

## FAME - skupina C

Materiál 95% vlna, 5% polyamid / Hmotnost 630 g/bm  $\pm$  5% / Šíře 140 cm / Odolnost proti oděru 200.000 Martindale / Odolnost proti žmolkování skupina 4/5 / Stálobarevnost skupina 5 / Odolnost proti ohni EN 1021 p1&2, BS 5852, crib 5



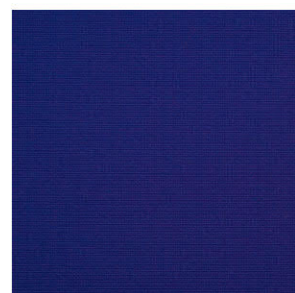
4150



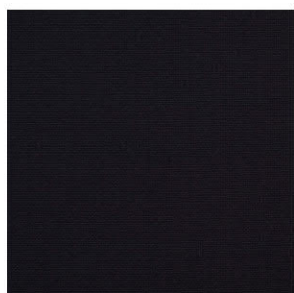
4151



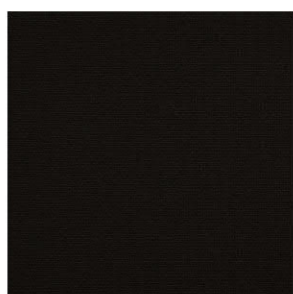
4153



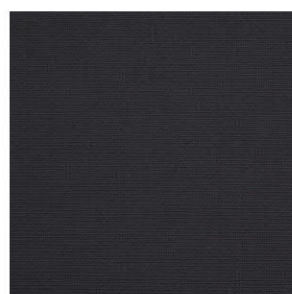
4154



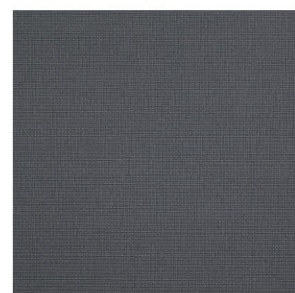
4155



4159



4166



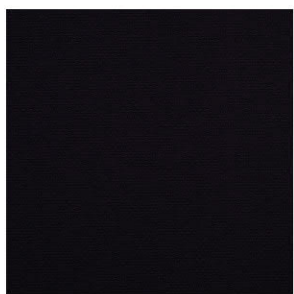
4168



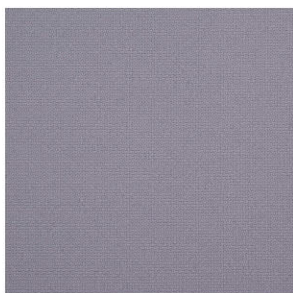
4169

## STEP - skupina C

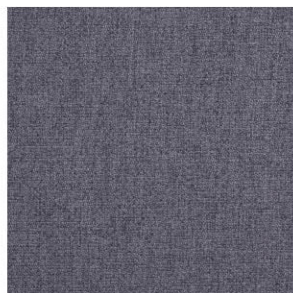
Materiál 100% Trevira CS / Hmotnosť 470 g/bm / Šířka 140 cm / Odolnosť proti oděru 100.000 Martindale / Odolnosť proti žmolkování skupina 4/5 / Stálobarevnosť skupina 5 / Odolnosť proti ohni EN 1021 1&2, BS 5852, crib 5, BS 7176 medium hazard



4201



4202



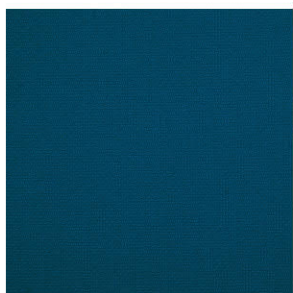
4203



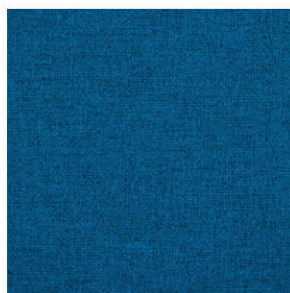
4207



4209



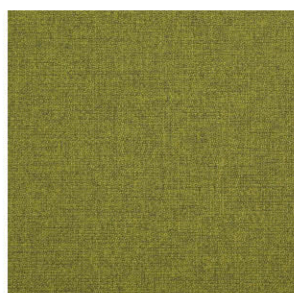
4211



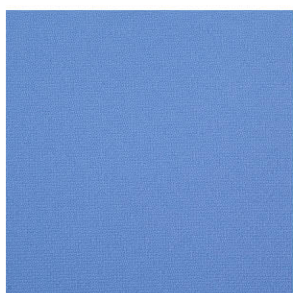
4212



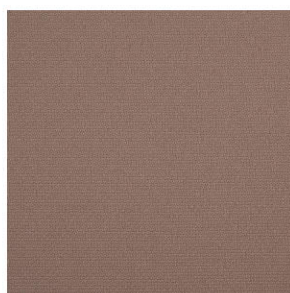
4213



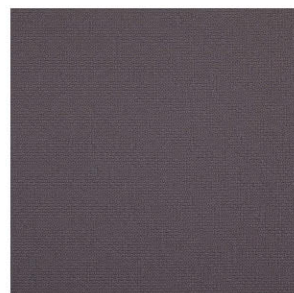
4214



4221



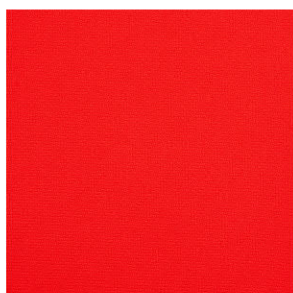
4223



4224



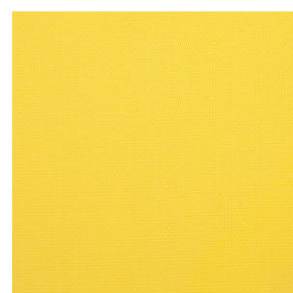
4225



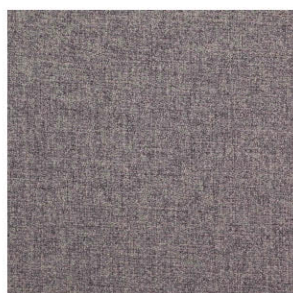
4228



4229



4230



4260

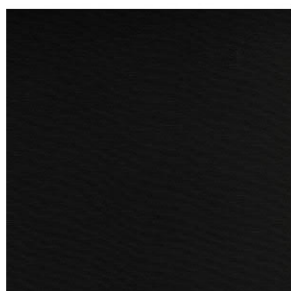


4265

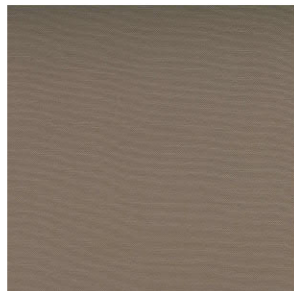


## SILVERTEC - skupina C

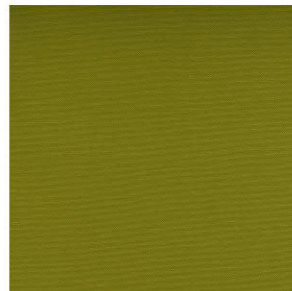
Materiál svrchní vrstva: 100% vinyl, podklad:100% polyester HI-LOFT<sup>2</sup>™ / Hmotnost 650g/m<sup>2</sup> / Šíře 137 cm / Ochranný povrch Permablok3®/ Odolnost proti oděru >300 000 Martindale / Odolnost proti ohni EN 1021 PART 1 & 2 / Odolnost proti chladu -23 °C / Odolnost proti UV záření >= 7 (1000 hodin, stupnice modré vlny)



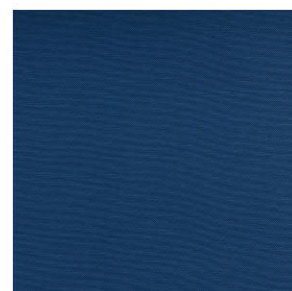
1750



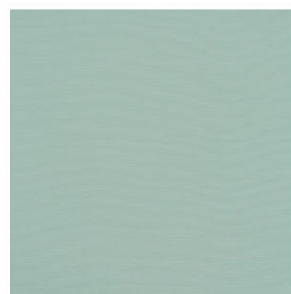
1752



1753



1755



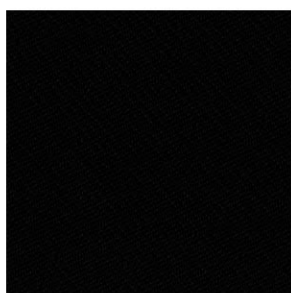
1756



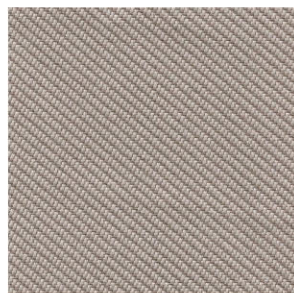
1759

## OCEANIC - skupina C

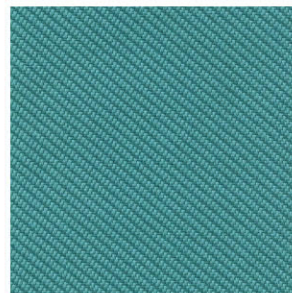
Materiál 100% recyklovaný polyester od spotřebitele, včetně 50% příze SEAQUAL / Hmotnost ± 5% 497 g/m<sup>2</sup> ; 695 g/ b.m. / Šíře 140 cm / Odolnost proti oděru martindale >100.000 / Odolnost proti žmolování skupina / Stálobarevnost skupina 5 / Odolnost proti ohni EN 1021 - 1 EN 1021 - 2 BS 7176 Low Hazard



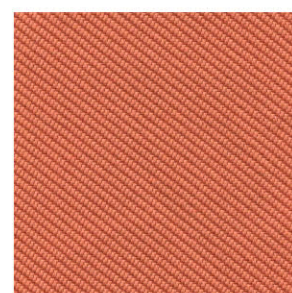
4351



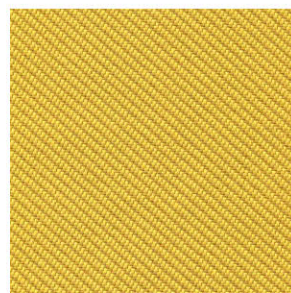
4352



4353



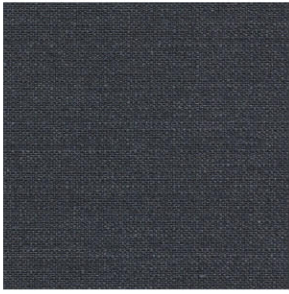
4354



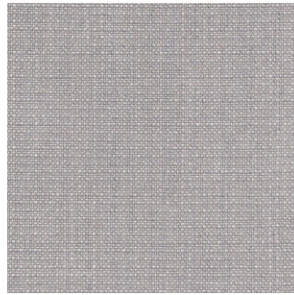
4355

## CRISP - skupina C

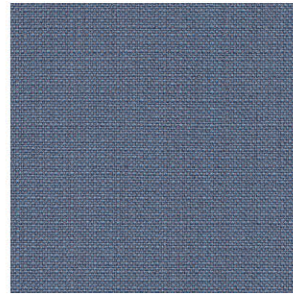
Materiál 93% New Zealand wool, 7% polyamid / Hmotnost 460 g/bm / Šíře 140 cm / Odolnost proti oděru >200 000 Martindale / Odolnost proti žmolkování skupina 4-5 / Stálobarevnost EN ISO 105-B02 / Odolnost proti ohni BS 5852 part 1 0,1, BS EN 1021 1&2 , class 1 | EMME / Eko-certifikát standard 100 by Oeko-tex® EU Ecolabel



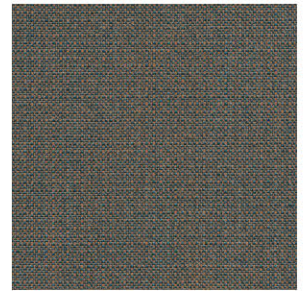
4301



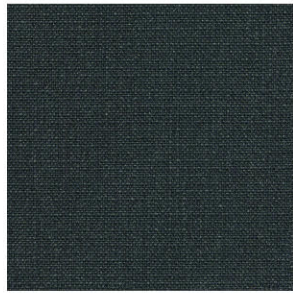
4302



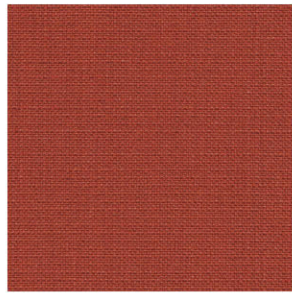
4303



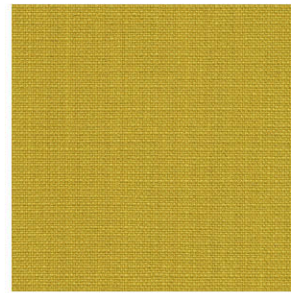
4304



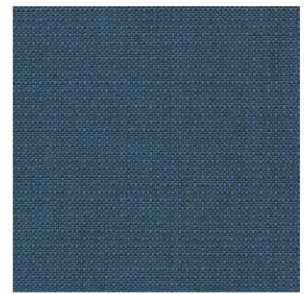
4305



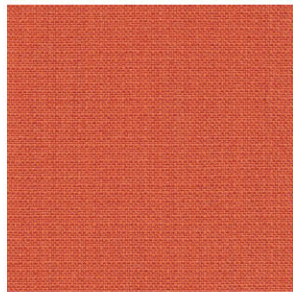
4307



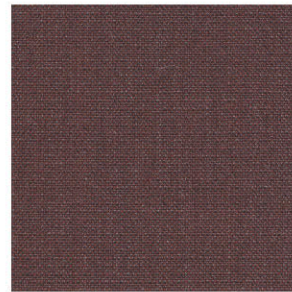
4308



4309



4310



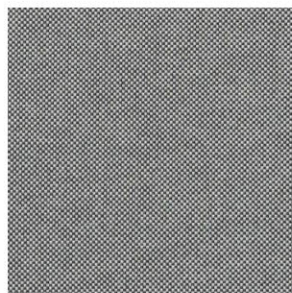
4311

## PURE - skupina C

Materiál 100% polyamid / Hmotnost  $\pm$  5% 230 g/m<sup>2</sup> ; 305 g/ b.m. / Šíře 140 cm / Odolnost proti oděru martindale 500.000 / Odolnost proti žmolkování skupina 4-5 / Stálobarevnost skupina 7 / Odolnost proti ohni DIN EN 1021-1, DIN EN 1021-2



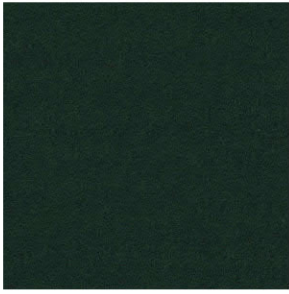
4071



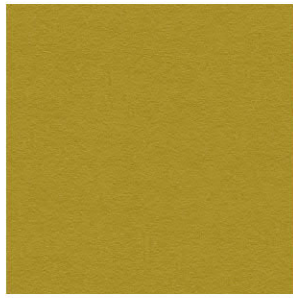
4072

## BLAZER - skupina D

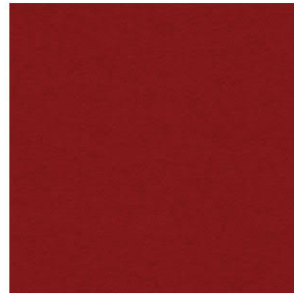
Material 100% vlna / Hmotnost  $\pm 5\%$  460 g/m<sup>2</sup> ; 644 g/ b.m. / Šíře 140 cm / Odolnost proti oděru martindale >50.000 / Odolnost proti žmolkování skupina 4 / Stálobarevnost skupina 5 / Odolnost proti ohni EN 1021 - 1&2 Cigarette & Match, BS 7176 Low Hazard, NF D 60-013, ONORM B 3825 & A 3800-1 (58kg/m<sup>3</sup> CMHR Foam), UNI 9175 Classe 1 IM



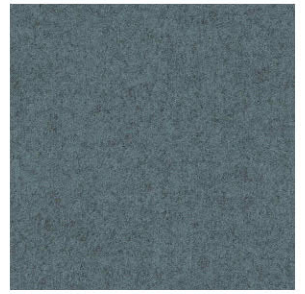
4154



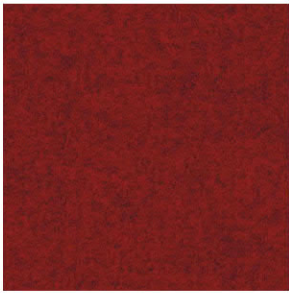
5094



5102



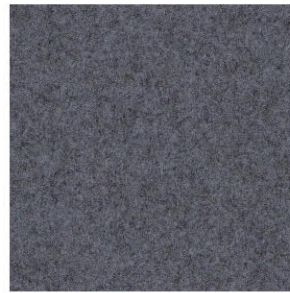
5119



5132



5136



5143



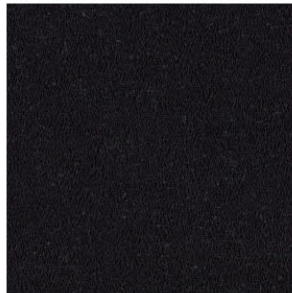
5144

## FLAX 24/7 - skupina D

Materiál 50 % polyamid, 30 % vlna, 20 % len / Hmotnost 390g/m<sup>2</sup>  $\pm 5\%$ , 545g / b.m  $\pm 5\%$  / Šíře 140 cm / Odolnost proti oděru intenzivní používání / 10 let záruka,  $\geq 200\ 000$  Martindale / Odolnost proti ohni / EN 1021 - 1 & 2, BS 7176 low hazard, BS 5852 Ignition Source 5, BS 7176 Medium hazard, UNI 9175 Classe 1M, NF D 60-013, poznámka: Hořlavost závisí na použité pěně / Stálobarevnost 5 (ISO 105 - B02) / Odolnost proti žmolkování mokrý: 4, suchý: 4 (ISO 105 - X12)



5060



5064

## SAVOY - skupina E

Material 100% Trevira CS / Hmotnost  $\pm$  5% 428 g/m<sup>2</sup> ; 600 g/ b.m. / Šíře 140 cm / Odolnost proti oděru martindale 100.000 / Odolnost proti žmolkování skupina 5 / Stálobarevnost skupina 8 / Odolnost proti ohni BS ENI 1021-1 Cigarette BS EN 1021-2 match BS 5852 part 1 0,1 cigarette and match, BS 5852 crib 5 DIN 4102 – B1 NFP 92-503/504/505 M1, AM 18-NF D 60-013 UNI 9175 class 1I EMME CA TB 117-2013



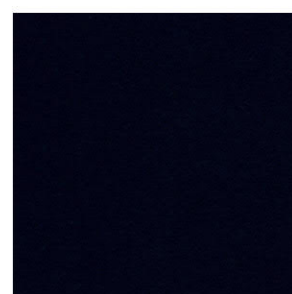
8522



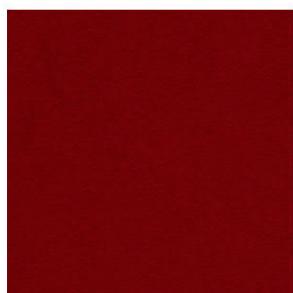
8523



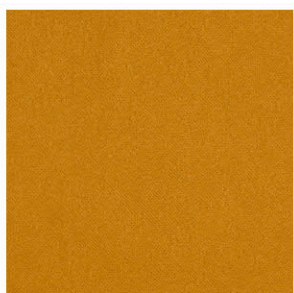
8524



8525



8527



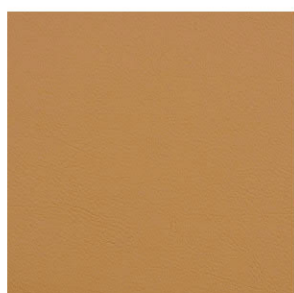
8528

## PRINCE - skupina E

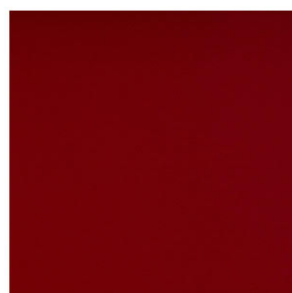
Kůže o tloušťce 0,9 – 1,00 mm, přírodní materiál vhodný pro čalounění. U přírodní kůže je možný malý rozdíl v barvě a struktuře. Struktura, malé porušení a záhyby jsou typické a dělají kůži originální. Proto tyto odlišnosti nejsou důvodem k reklamaci.



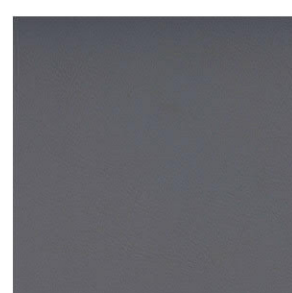
52



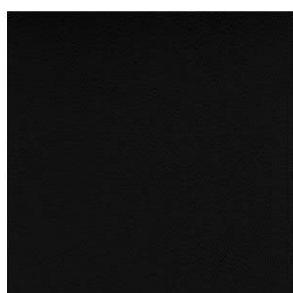
249



253



254



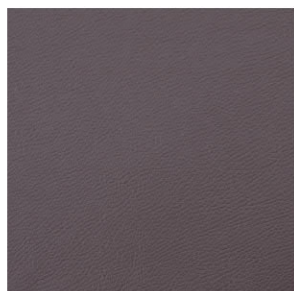
268

## SOLID - skupina F

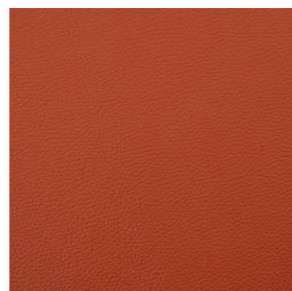
Kůže o tloušťce 1,3-1,5 mm. Přírodní materiál vhodný pro čalounění. U přírodní kůže je možný malý rozdíl v barvě a struktuře. Struktura, malá porušení a záhyby jsou typické a dělají kůži originální. Proto tyto odlišnosti nejsou důvodem k reklamaci.



8001



8002



8003



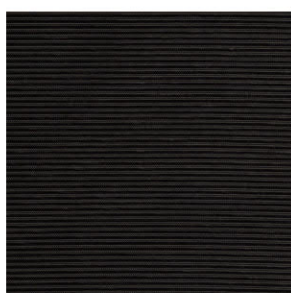
8004



8007

## síť LINE (Easy Pro LINE)

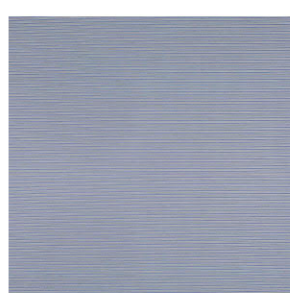
Materiál 64 % Polyester, 36 % Polyuretan



6004



6005



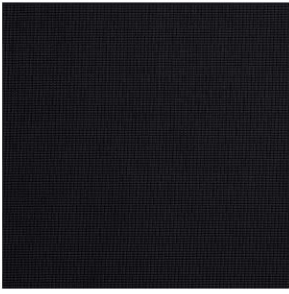
6006



6008

## sít' K+R

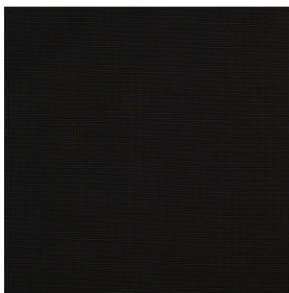
Materiál: 99 % polyester, 1 % elasan / Hmotnost 300 g/bm / Šíře: 165 cm / Odolnost proti žmolkování - skupina 4/5 / Stálobarevnost skupina 5/7 / Odolnost proti ohni DIN EN 1021:2006 Part 1



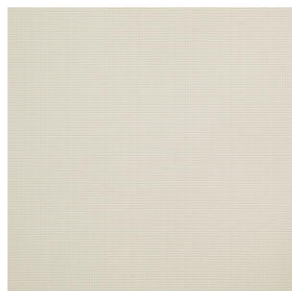
482

## sít' MESH K+R

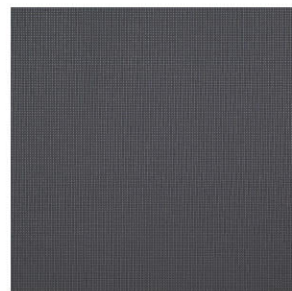
Materiál: 97% polyester, 2% polyamid, 1% elasan / Hmotnost: 370 g/bm / Šíře: 120 cm / Odolnost proti oděru 30 000 Martindale



410



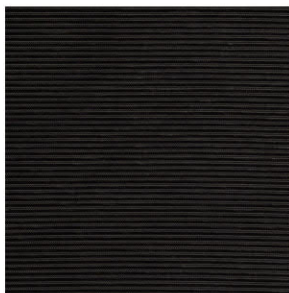
424



425

## sít' RIB

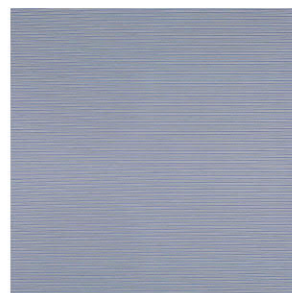
Materiál 34 % Polyester, 58 % Polyamid, 8 % Polyacryl / Hmotnost 400 g/bm / Šíře 160 cm / Odolnost proti oděru 100.000 Martindale / Odolnost proti žmolkování skupina 4/5 / Stálobarevnost skupina 5/7 / Odolnost proti ohni DIN EN 1021:2014-01 Part 1



431



432



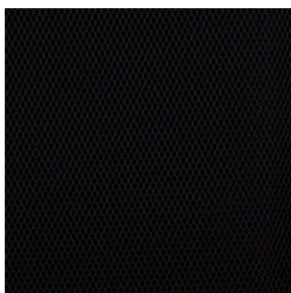
435



436

## sít' OMEGA

Materiál 100% polyester / Hmotnost 500 g/bm / Šíře 160 cm / Odolnost proti oděru 100.000 Martindale / Odolnost proti žmolkování skupina 4/5 / Stálobarevnost skupina 5/6 / Odolnost proti ohni BS EN 1021 1&2



474